



WELCOME TO CRANBOURNE



Your guide to starting secondary school

2026-27



Contents



- Welcome to Cranbourne
- Aims of the School
- Cranbourne Code of Conduct
- Year 6 Transition Days
- This Is Me - Transition Task
- First Day of Term
- Term Dates
- The School Day
- Map of the School
- School Uniform
- Equipment Checklist
- Cranbourne House System
- Pastoral Support
- Reporting a Student Absence
- Safeguarding
- The Lighthouse
- Special Educational Needs and Disabilities
- The Resourced Provision
- Curriculum
- Transport to School
- Phone Pouches
- Enrichment Activities
- Rewarding Students
- HEPPU
- Catering
- Cranbourne Online
- Online Taster Sessions
- Cranbourne Community
- Green Cranbourne
- Stay up to Date
- Key Contacts
- Roadmap to Cranbourne



Welcome to Cranbourne

Dear Parents and Carers,

It is with a warm welcome I thank you for choosing Cranbourne to continue your child's educational journey. As you step through the Reception doors, you become part of our Cranbourne Community and we are here to support you and your child as they transition into secondary school and for the next five years.

It is our responsibility as a school to help students to shape their own future; to encourage their aspirations and provide opportunities for building confidence, resilience, leadership skills, as well as developing their awareness of the world around them. By nurturing their talents and recognising their strengths, we enable our students to make thoughtful decisions and valuable contributions to both the school and the wider community.

Our curriculum offers a broad range of opportunities both inside and outside of the classroom where students can immerse themselves in their passions. Cranbourne is recognisably an inclusive and diverse setting where children from all corners of the world and all abilities come together and flourish with the support and challenge they need.

Every day in school is different, but some things remain constant: the fantastic students, dedicated staff and committed parents who make up our excellent Cranbourne family. Our strong ethos and belief in our values means that we are a school that never stands still, always striving to serve our present, past, and future communities.

As a forward-thinking school, sustainability is a high priority, and you will receive all communications from us via our parent communication app, Edulink. By committing to make Cranbourne greener we hope our small effort will go a long way in the future.

We are absolutely delighted that you have a place at Cranbourne, and we look forward to welcoming you and your child this year.



Headteacher



Aims of the school

Our core purpose

Cranbourne provides a broad and interesting education which aims at excellence, enabling students to achieve their best academic standard, and develop into confident, responsible and caring young adults.

Statement of aims

- Provide a safe, happy and inclusive environment to bring together children from all our communities
- To achieve excellent exam results through high quality, inclusive teaching and a broad curriculum
- To encourage students to challenge themselves beyond the classroom by participating in House and sporting activities, extra-curricular opportunities and taking on Student Leadership roles
- To provide exceptional challenge and support for all

Code of Conduct

Our aim is to encourage high standards of behaviour and to make sure that everyone understands what acceptable conduct is.

We have basic expectations which apply in every subject to make sure that excellent teaching can take place consistently.

The Code of Conduct is a summary of our expectations; a framework within which we expect students to act. 'Be Ready', 'Be Respectful' and 'Be Safe'.

We ask parents and students to sign the Home School Agreement in the student toolkit which is a summary of our partnership between school, parents and students. We must work together for a successful education for our children.

Basic Expectations

Students will receive a House Point from their subject teacher at the end of each lesson if they have met the basic expectations.

1. **Behaviour:** students behave in line with school expectations and follow the Code of Conduct
2. **Arrive on time:** students arrive for the lesson on time
3. **Uniform:** students are wearing full school uniform in their lesson
4. **Equipment:** students have all of the correct equipment for their lesson
5. **Personal best:** students work to the best of their ability throughout the lesson, complete homework on time and have their toolkits with them at all times



CRANBOURNE CODE OF CONDUCT

BE READY



Arrive on time

Wear correct uniform



Essential equipment ready to use

Settle quickly and follow all instructions



Always try your best

No food or drink in class



Phones off and in pouches

BE RESPECTFUL

Treat others with kindness, respect and care



Listen to the opinion of others

Speak and act in a way that will not offend others



Never use discriminatory language

Behave politely and respectfully when travelling to and from school



Take responsibility for your actions

BE SAFE



Follow the IT agreement

Treat the building with respect



Stay away from out of bounds areas

Do not leave the classroom during lessons



No filming or taking photos in school

Use the one way system



Put rubbish in bins and recycle

Open doors for others



EXCELLENCE IN EVERYTHING

Year 6 Transition Days

Thursday 25 & Friday 26 June 2026

Arrival/collection arrangements

All Year 6 students will meet in the Sports Hall by 9am on both days. Please come to the Sports Hall entrance and our Student Ambassadors will show students where to go to sign in.

Please collect your child from outside the Sports Hall at 2.30pm.

Car parking

Cars are not permitted to be driven onto the school site unless you have a medical reason for the safety of our students.

As Cranbourne is located in a residential area, parking on Wessex Close is extremely limited.

What your child should wear

Students should wear their normal Junior/Primary school uniform to our Transition Days.

What your child should bring

- A pencil case with a pen, pencil, rubber and ruler
- A bottle of water
- A snack for breaktime
- Packed lunch if your child does not want to eat a school lunch from the Canteen
- A coat if it is raining on the day
- Their 'This Is Me' project

What to expect

Your child will have the opportunity to meet their tutor, Head of House, senior staff, pastoral staff (CPPs) and a variety of subject teachers.

The Transition Days will start with a presentation from Miss Conlon (Headteacher), who will introduce staff members and explain how the day will run.

Students will then split off into House groups and have the chance to experience lessons, find their way around the school with our Student Ambassadors, make new friends and ask any questions they like.

On Friday 26 June, the day will end with your child being presented with a school tie from their Head of House.

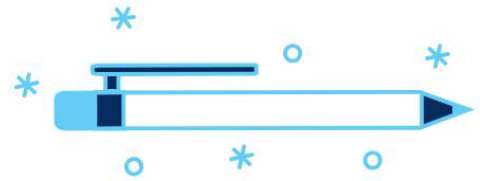
Lunchtime in the Canteen

Students will be provided with a complimentary lunch in the Canteen on both days, should they wish. There will be a variety of options including a vegetarian choice.

If you would like your child to receive a free lunch in the Canteen, please complete the lunch choices form which will be emailed to you in June.

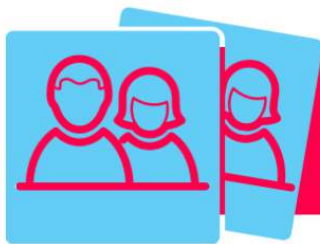
THIS IS ME!

Year 6 Transition Task



We are asking our Year 6 students to complete a **“This is Me”** Project which introduces themselves to their new teachers.

You can be as creative as you like for this project, for example, you can make a leaflet, poster, PowerPoint or even a video!



Please include: your Name, Primary School and photos.

Please use the questions below to complete your **“This is Me”** project.

- What is your favourite book and author?
- What clubs or activities do you do outside of school (scouts, guides, karate, judo, dancing, gymnastics, etc)
- Write one sentence that sums up the kind of person you are ...
- What do you want to be when you grow up?
- Who is in your family?
- Do you have any pets?
- Who are your best friends?
- What are your hobbies?
- Do you play a musical instrument?
- What is your favourite sporting activity?
- What do you like to do at the weekends?
- What are the best things about your primary / junior school?
- What are your favourite subjects?
- What are you looking forward to when you come to Cranbourne?



Please send completed work to Ms Corrigan at p.corrigan@cranbourne.hants.sch.uk by **Monday 22 June** or bring along on the first Transition Day on **Thursday 25 June**.



First Day of Term

Wednesday 2 September 2026

The Autumn Term begins on **Wednesday 2 September 2026**. Year 7's will start at 8.30am, with the rest of the school joining from 10.50am. Your child should arrive at Cranbourne by 8.25am.

Further information providing more details on where to go on the first day will be communicated to you nearer the time.

Students are expected to arrive in full school uniform with the correct equipment. It will not be necessary for your child to bring their PE kit on this day.

If your child would like to purchase food at school on their first day, please send cash in a sealed, named envelope. Our Finance team will collect this from students and add it to their ParentPay account. You will receive your login details for ParentPay in the first week of term.

The day will end at 3pm and students can either be collected from outside the Main Reception or can make their own way home.

A reminder that parents are not allowed to drive onto the school site to collect students unless you have a medical reason.



Academic Year 2026/27

Term	Start date	End Date
Autumn 2026	1 September 2026	18 December 2026
	Half term 26 October- 30 October 2026	
Spring 2027	4 January 2027	25 March 2027
	Half term 15 February - 19 February 2027	
Summer 2027	12 April 2027	21 July 2027
	Half term 31 May – 4 June 2027	

Bank and Public Holidays 2026/2027

Christmas Day	25 December 2026	Easter Monday	29 March 2027
Boxing Day	26 December 2026	May Day Holiday	3 May 2027
New Year's Day Holiday	1 January 2027	Spring Bank Holiday	31 May 2027
Good Friday	26 March 2027	Summer Bank Holiday	30 August 2027

* First day after break

Last day before break



School Holidays



Bank Holidays and National Holidays

The determined programme of school term and holiday dates for county and controlled schools for the academic year 2026/2027.

Please note Tuesday 1 September 2026 is an INSET day. The first day of term will be **Wednesday 2 September 2026.**

Cranbourne's INSET days for 2026/27 will be listed on our website once they have been confirmed.

The School Day

The school day begins at 8.30am. Students who arrive to their Personal Development Learning session (PDL) after 8.30am are considered late, and will be given a HEPPU support session for Punctuality. The Canteen is open for students to get breakfast from 8am.

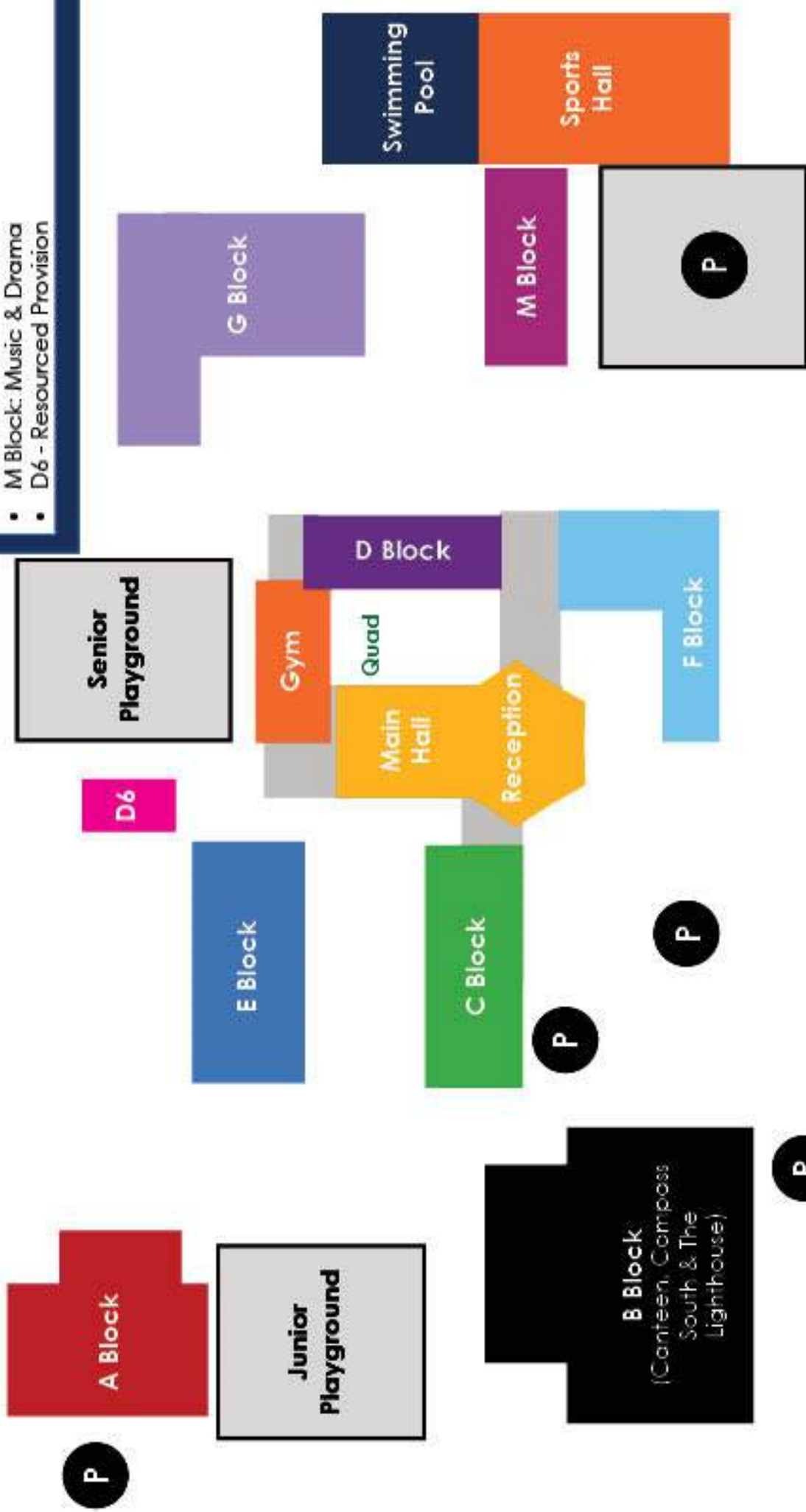
8.30am	School begins
8.30am - 9.00am	PDL/Assembly
9.00am - 9.55am	Period 1
9.55am - 10.50am	Period 2
10.50am - 11.10am	Break
11.10am - 12.00pm	Period 3
12.00pm - 12.50pm	Period 4
12.50pm - 1.20pm	Lunch
1.20pm - 2.10pm	Period 5
2.10pm - 3.00pm	Period 6
3.00pm	School ends

We operate a 2 week timetable. This will be given to your child on their first day at Cranbourne, and can be accessed via Edulink.



CRANBOURNE SCHOOL MAP

Back Field



Front Field

Cranbourne School Uniform

At Cranbourne, we believe in establishing a culture of behaviour that supports learning. This is reflected in our expectations of personal appearance and in terms of the standards and aspirations we have for our students.

We believe that a smart appearance helps develop a sense of pride which reflects in a more positive approach to learning; in short, our students should look smart and ready to achieve great things.

It is a student's responsibility to wear their uniform correctly to show respect for their school community, including on the way to and from school.



Required uniform	Optional alternative
School blazer, this is to be worn around school at all times. It may be removed in lessons with the teacher's permission. (Compulsory)	
	A Cranbourne branded V neck jumper may be worn in addition to, but not instead of, the blazer (Optional)
Smart black trousers, must be loose-fitting and about the same width from knee to ankle, not skinny fit or cropped length. No leggings are to be worn (Generic)	Plain black skirt, purchased from Skoolkit in the 'Charleston' style (Compulsory) Plain black shorts, must be knee length Summer term only (Optional)
White collared shirt or blouse, worn tucked in (Generic)	
House tie Austen: Blue Andrew Lloyd Webber: Purple Thomson: Red White: Green	
Plain black or white knee or ankle socks or tights or plain tan tights No trainer socks (Generic)	
Plain black school shoes Boots, heels, open toed shoes, trainers, canvas shoes are not acceptable (Generic)	

- Compulsory: This is branded and purchased from our uniform provider, Skoolkit
- Generic: This can be purchased from any provider
- Optional: If selected, this must be purchased from our uniform provider, Skoolkit

Make up

- No make up or nail varnish is to be worn
- This includes false eyelashes and excessively painted on or drawn-on eyebrows
- False nails, including acrylic and gel nails, are not allowed to be worn in school

Jewellery

- No jewellery is to be worn
- A wrist watch can be worn
- Parents wishing their child to wear an item of jewellery for religious or cultural reasons should discuss with the Headteacher
- No facial or body piercing is permitted. Any fresh piercing will need to be removed and a clear retainer worn
- Any jewellery worn will be confiscated and will need to be collected from SLT

Students are not permitted to wear hooded sweatshirts as part of the uniform or as a coat.

Physical Education Kit

Essential Kit:

- Navy Cranbourne PE top available from Skoolkit
- Navy Shorts available from Skoolkit
- White socks for indoor lessons
- Light blue socks for football/rugby
- Trainers or football boots
- One-piece swimming costume or swimming trunks/shorts in black or blue
- Towel

Advisable Kit:

- Cranbourne navy and sky blue Half Zip Sweatshirt available from Skoolkit
- Cranbourne navy and white tracksuit bottoms available from Skoolkit
- Shin guards for football/hockey
- Swimming goggles
- Gum shield

Cranbourne school uniform is available to purchase from Skoolkit, both online at www.skoolkit.co.uk/school-uniform/130 or at the Basingstoke store on Church Street (RG21 7QG).

Cranbourne operate a second hand uniform shop, organised by Kathy Gare. This will be open during the school summer holidays. Dates will be confirmed nearer to the time.

Cranbourne School

Skoolkit will be holding a **10% discount week** in our Basingstoke store from **Monday 20th – Saturday 25th July**, where all items listed below will be subject to a **10% discount for this time only**.



2026 Price List				
House Colours:	Red – Thomson	Blue – Austen	Purple – Andrew Lloyd-Webber	Green – White
Daywear	Price			
Items marked * can only be purchased from Skoolkit				
House Colour Clip-On Tie * (compulsory)	£6.75			
Boys & Girls Navy Embroidered Trimmed Eco Blazer * (compulsory)	From £29.99			
Navy/Sky Trimmed Sweater * (optional)	From £19.00			
Unisex White Eco Twin Pack Shirts	From £15.00			
Black Trousers	From £17.99			
Girls Black SSK504 Charleston Skirt * (compulsory – must be knee length)	From £22.00			
Black Senior Daywear Shorts (summer term only; optional)	From £16.00			
Iron-On Name Tapes	x36 – £5.00/ x72 – £5.99			

PE Wear	Price
Navy/Navy/White Embroidered G920 PE Polo Shirt * (compulsory)	From £16.00
Navy/White P231 PE Shorts (compulsory)	From £10.99
Navy/Sky Embroidered B250 Sweatshirt * (optional)	From £22.00
Navy/White ZR35 Track Pants (optional)	From £20.00
Sky Football Socks (compulsory for football & rugby)	Junior – £5.00 Senior – £6.00

Prices are correct at the time of printing.
For full size and pricing information, please refer to our website.

basingstoke@skoolkit.co.uk
15, Church Street, Basingstoke, RG21 7QG
Opening Times
Mon - Fri 9:00 AM - 17:30 PM
Sat 9:00 AM - 17:00 PM

Skoolkit

Online orders must be placed by Friday 14 August to allow for delivery before the start of the 2026/27 school year.


Please note orders placed online throughout July, August and September can take up to 14 working days.

Use code **'SUMMER26'** for free delivery on online orders between Saturday 25 July and Saturday 1 August.



Equipment Checklist

Essential Items:

- Two pens (black) and one purple
 - Pencil case (clear so it can be used for exams - named)
 - A ruler
 - A rubber
 - Two writing pencils
 - A pencil sharpener
 - Scientific calculator
 - A full water bottle each day – clearly named
 - Phone Pouch - will be given on the first day
 - A warm coat that fits over the blazer for the Winter months
- 

Useful Items:

- Coloured pens or pencils
- Highlighter
- Tissues

If students regularly attend school without the correct equipment, they will be required to stay after school for an equipment support session.

Cranbourne House System

Cranbourne students are members of one of our four Houses:

- **Andrew Lloyd Webber**
- **Austen**
- **Thomson**
- **White**

Each House has a Head of House and a designated Cranbourne Parent Partner (CPP) overseeing each student's progress and pastoral care.

Students wear a tie in their house colour and each house is split into vertical tutor groups, with students from all year groups.

The tutor group is a welcoming place, with a Personal Tutor to guide students through their five years with us. Students meet with their tutors for half an hour at the beginning of each day for a Personal Development Learning (PDL) session. Students will attend a themed assembly once a week within their Houses during PDL.

Cranbourne's four Houses are named after local people, who have achieved amazing things by following their passions and interests. They are true role models for Cranbourne students.



ANDREW LLOYD WEBBER HOUSE

Dedicated to Performing and Expressive Arts, ALW is named after Andrew Lloyd Webber, internationally acclaimed composer.



We believe in

Expressing ourselves as individuals



Bringing people together



Having fun



In ALW, we

Are courageous and creative



Are dynamic



Love the Arts



AUSTEN HOUSE

Dedicated to Language and Literature, Austen is named after Jane Austen, one of our most famous and most loved British novelists.



We believe in

The power of words



Expressing our thoughts and ideas



Working with others to succeed



In Austen, we

Never conform to stereotypes



Love reading



Feel empowered through language



THOMSON HOUSE

Dedicated to Humanities, Thomson is named after the Thomson Family, all of which attended Cranbourne and went on to lead successful careers in journalism, education and civil service.



We believe in

Respect for all cultures, ethnicities and religions



Equality for all



Keeping an open mind



In Thomson, we



Are global citizens



Are future leaders



Are aware of our past, involved in the present and planning for the future

WHITE HOUSE

Dedicated to Science, Maths and logic, White is named after Gilbert White, an eighteenth century naturalist.



We believe in

The power of nature and numbers



A sustainable future for all



Protecting our world



In White, we



Think logically



Observe and understand



Pay attention to detail

Pastoral Support

Cranbourne Parent Partners

The Cranbourne Parent Partners (CPP) are pivotal in ensuring the efficient flow of communication between parents, students and staff. They work very closely as part of the Pastoral team with the Head of Houses, Tutors and safeguarding leads to support each student at Cranbourne.

The CPPs monitor the attendance throughout the school day and will make phone calls home where there are unexplained absences.

Your child's CPP should be your first point of contact with the school for reporting any issues or planned absences.

Andrew Lloyd Webber House:

- Miss Nicola Williams
- n.williams@cranbourne.hants.sch.uk
- 01256 868642



Austen House:

- Mrs Rebecca Ball
- r.ball@cranbourne.hants.sch.uk
- 01256 868643



Thomson House:

- Miss Hollie Skinner
- h.skinner@cranbourne.hants.sch.uk
- 01256 868650



White House:

- Miss Julie Wells
- j.wells@cranbourne.hants.sch.uk
- 01256 868649



Parent Support Advisor

Our Parent Support Advisor, Kathy Gare, will be known to families transferring to us from our immediate catchment primary schools. Kathy is here to offer advice and support for all parents.

- k.gare@cranbourne.hants.sch.uk
- 01256 868645

Reporting a Student Absence

For a child to reach their full educational achievement a high level of school attendance is essential. We set a target of 96% attendance for all students.

What To Do If My Child Is Unwell?

If your child is absent, parents/carers must:

- Email student.absence@cranbourne.hants.sch.uk as early as possible, and by 8.30am on the first day of absence. Please give a reason for the absence and an expected return date. If you are unable to email, please call your CPP
- Please contact us every day your child is not at school with a reason for absence

If we do not hear from you, your child's absence will be registered as unauthorised, and we will contact you as part of our processes around safeguarding.

Medical appointments

Medical and dental appointments should be made outside of the school day. Where this is not possible, a note and appointment card should be sent to the school prior to the appointment via student.absence@cranbourne.hants.sch.uk

Request For Leave Of Authorised Absence

Headteachers may not grant any leave of absence during term time unless there are exceptional circumstances. All applications for a leave of absence must be made in advance and will only be considered if there are exceptional circumstances.

The fundamental principles for defining exceptional circumstances are rare, significant, or unavoidable, which means the event could not reasonably be scheduled at another time.

Examples of exceptional circumstances may include:

- Funeral of close relative
- Religious or cultural observance
- Child participation in public performance
- Competing at national level in sporting activity
- Gypsy, Roma, Traveller and Showman families for work purposes

For more information and to view our Attendance Policy, please visit our website.

ATTENDANCE MATTERS

Your Attendance, Your Achievement, Your Future



95%

- 48 lessons missed each year
- 8 days in total
- 45 hours of learning missed

90%

- 96 lessons missed each year
- 16 days in total
- 90 hours of learning missed

85%

- 144 lessons missed each year
- 24 days in total
- 136 hours of learning missed

The hours add up... even one day absent here and there has a huge impact on your learning.



Aim to be in school, every day and on time

We expect at least **96%** attendance from our Cranbourne Community - keep your eyes peeled for our attendance streaks to earn your rewards!



Safeguarding at Cranbourne



Safeguarding at Cranbourne means ensuring that all members of our community are happy, safe and can thrive. Our students are educated to be able to recognise unsafe situations and make informed decisions. They are signposted to many sources of support, both at school and in the local community.

We provide the following:

- A safeguarding curriculum
- Support from internal and external agencies
- Guidance, information and advice
- Health and Safety information
- Mental health support
- Working with Children's Services to refer families we believe are in need of support

Students at Cranbourne are educated through the PSHE Education Curriculum which encompasses our legal obligation to deliver the Relationships, Sex and Health Education curriculum (also known as RSHE) and Citizenship Education Curriculum.

Each student learns about all types of relationships, their health and wellbeing, managing different risks and how to live well in the wider world.

This is delivered by subject specialists in a fortnightly lesson. In addition, your child will benefit from content taught during PDL and assemblies.

We work very closely with many external agencies that support Children Services across Basingstoke. These include Early Help Hub, Early Intervention Support Team, Catch 22, YPI, YOT and Spotlight. In school, students have access to our intervention teams and the Lighthouse which supports students with their mental health and wellbeing.

If you have a concern or would like advice please contact the school and ask to speak to a member of the DSL team.

"Leaders and/or those responsible for governance and oversight fulfil their specific responsibilities and have established an open culture in which safeguarding is everyone's responsibility and concerns are actively identified, acted upon and managed. As a result, pupils are made safer and feel safe. Leaders do not tolerate any form of discrimination. If there is bullying, school leaders deal with it quickly and effectively. Pupils feel cared for and describe how they value being part of the 'Cranbourne family.'"

- OFSTED report, 2026

The Lighthouse



The Lighthouse is our provision to enhance the well-being of our students and staff. We offer a safe and welcoming environment where students can be heard and feel supported which will positively impact on their learning and mental health. Being happy and healthy is the first step to being successful.

The Lighthouse is a safe, calming and friendly environment for students to access when struggling with issues in and outside of school. This facility is accessible to students throughout their school day.

We believe well-being is at the heart of our school and ensure that our support interventions are bespoke through a thorough understanding of what each student requires.

The roles of the Senior Mental Health Lead and the Mental Health Practitioner are:

- Raising awareness of mental health and well-being throughout the school
- To ensure there are packages of excellent support available (bespoke to each individual student)
- To oversee the Mental Health Ambassadors within school
- To ensure training is delivered to all staff
- Deliver assemblies to all students

- To lead staff and student well-being teams to drive resilience and mental health awareness throughout the school
- To reduce stigma around talking about mental health and well-being so everyone is comfortable in addressing issues and discussing topics

We deliver a wide variety of support sessions within The Lighthouse including:

- Trauma work
- Therapeutic Story Writing Groups
- Anxiety and Low Mood
- Building Resilience
- Self-Esteem and Self-Worth

Senior Mental Health Lead

Mrs C Ryan

c.ryan@cranbourne.hants.sch.uk

Mental Health and Wellbeing Practitioner

Mrs C Millett

c.millett@cranbourne.hants.sch.uk



Special Educational Needs and Disabilities

The Compass is made up of three separate spaces around the school. The South Unit, based in the Canteen, is for our Year 7 students and has a dedicated team of Learning Support Assistants who work with students within lessons, provide interventions and staff the Unit during social times.

Students are referred into the Compass Department through a number of routes:

- They start Year 7 on the SEND register from their feeder school or they already have an EHCP in place
- They are referred by their Head of House or Tutor after discussions with parents
- They are referred by a Head of Department following concerns regarding their progress after discussions with subject teachers
- They are identified in our Year 7 screening programmes or when they start at Cranbourne in later years
- Parents raise concerns with a member of staff
- A diagnosis is made by a health professional

A student will be placed on the SEND register if they meet the criteria as set out by Hampshire County Council. Students may be placed on a monitoring list prior to this.

Parents are notified when a student is placed on the SEND register and a support package is put into place.

Students may also be removed from the SEND register if they have made appropriate progress within their area of need, this is in discussion with their parent or carer.

SENDCO and Head of the Compass Unit

- Mrs M Horimoto
- m.horimoto@cranbourne.hants.sch.uk
- 01256 686662

Deputy SENDCO

- Mrs V Ellis
- v.ellis@cranbourne.hants.sch.uk



Examples of support that we can offer

Please note that each type of support is not necessarily relevant to all students. An individual package is put in place for each student in consultation with the student, parents, teaching staff, Compass Support Staff and, if applicable, outside agencies.

- **Literacy Support:** Spelling, reading and comprehension programmes
- **Emotional Support:** Interventions to help students overcome barriers, relaxation interventions, ELSA, Thrive, TALA, therapeutic approaches, meet and greet/ goodbye, safe spaces, mentoring, social stories, sensory support and Gardening Club
- **Organisation and Study Skills:** Personal space in the Compass Unit to help with managing equipment, study skills, exam revision sessions and homework club
- **Exam Support:** Exam concession testing (through a qualified assessor in line with JCQ guidelines) and support in internal assessments and controlled assessment. Exam laptops are available
- **Numeracy Interventions:** For students with low numeracy levels

- **Support in Lessons:** We have a large and dedicated team of Learning Support Assistants, intervention workers and specialist HLTA
- **Handwriting and Typing Support:** We can support the motor skills required to support handwriting and also offer a touch-typing intervention
- **Dyslexia Screening:** Referral to the Resourced Provision for Students with Dyslexia following on from a Dyslexia screener or outside professional diagnosis
- **Mental Health Support:** Referral to The Lighthouse

In addition, we work with a range of external agencies including:

- Hearing impaired and physical disability specialist teachers and advisors
- Educational Psychologists
- Communication and interactions team
- CAMHS
- School Mental Health Team
- Paediatric team



The Resourced Provision

The Resourced Provision for students with Dyslexia offers specialist teaching and has places for 16 students across the five year groups. Whilst we work primarily with children who have been assessed as having specific learning difficulties and who meet the county criteria, the Unit is an integral part of the school. The Unit liaises with every department to ensure that students with literacy difficulties are fully supported in all areas.

Students are fully integrated into the mainstream for the greater proportion of their time. Sessions in the Unit and support in mainstream lessons are arranged according to individual need. Students who have an official place in Year 9 upwards choose the Unit as one of their GCSE options.

For all students our aim is to:

- Raise the literacy skills of each student and enable them to fully access the curriculum and participate in mainstream lessons
- Achieve a balance between giving students sufficient support to cope and make progress while developing their confidence and independence
- Build on students' strengths and provide targeted support in areas of weakness, so that every individual can fulfil their potential

Teaching for each key stage is outlined below:

- Key stage 3: Students follow an individual reading and spelling programme incorporating organisational, writing and study skills
- Key stage 4: Emphasis is on supporting students with core and option subject work skills as well as reinforcing the student's individual reading

Head of Resourced Provision for Students with Dyslexia

Mrs Esther James

e.james@cranbourne.hants.sch.uk



Curriculum at Cranbourne

Cranbourne has a well-balanced curriculum; diverse, enriching, with choice for all, enabling all students to gain a strong suite of qualifications to take them into post-16 education or training. We follow the requirements of the National Curriculum.

A child in Year 7 and 8 takes courses in the following subjects:

- English
- Mathematics
- Science
- History
- Geography
- Religious Studies
- French or Spanish
- Physical Education (PE)
- Food and Nutrition
- Performing Arts, including Drama and Dance
- Music
- Art
- Design and Technology (including 3D Design and Textiles)
- Computing
- Personal Social and Health Education (PSHE)

In Year 9, the following courses are currently available:

Compulsory

- English
- Mathematics
- Science
- History
- Geography
- Religious Studies
- French or Spanish

Option choices

- Textiles
- 3D Design
- Art
- Drama
- Dance
- Music
- Geography
- History
- Business Studies
- Health and Social Care
- Computing
- Hair and Beauty



In Year 10 and 11, the following courses are currently available:

Compulsory

- English
- Mathematics
- Science
 - Combined Science (Double Award)
 - or Triple Science (Biology, Chemistry and Physics)
- Religious Studies
- Physical Education (PE)
- PSHE

Option choices

- Art and Design
 - Textiles
 - BTEC Business Studies
 - Drama
 - Dance
 - French or Spanish
 - Hair and Beauty
 - Health and Social Care
 - 3D Design
 - BTEC Sport
 - Geography
- History
 - Film Studies
 - Music
 - Photography
 - Computer Science
 - Hospitality and Catering



Transport to School

Bus pass

If Cranbourne is your catchment school, you may be eligible for a bus pass, provided by Hampshire County Council.

Students who live in Oakley will be issued with a Stagecoach public transport bus pass that allows travel on Route 11. This service goes via Winchester Road.

Please be aware that bus passes are not automatic, you must apply via the link below by **Sunday 21 May 2026**:

<https://www.hants.gov.uk/educationandlearning/schooltransport/parent-carer/eligibility/mainstream-school>

For information about timetables for bus services to school please visit the Stagecoach website directly at <https://www.stagecoachbus.com/>

Bicycles

Students cycling to school should have a safe route and have the necessary safety equipment. Please ensure your child's bike is roadworthy and it has a secure locking device.

A helmet must be worn when cycling, and all cyclists must dismount when entering the school premises.

The school has secure locked bike sheds with CCTV coverage. However, we can accept no responsibility for bicycles left on school premises.

Cars on site

To keep our students safe, cars are not allowed to be driven onto the school site without a prearranged appointment or medical reason. At the start and end of the school day, there are staff on the gate to support this.

At Cranbourne we are passionate about the environment and strive towards sustainability. Our Green Cranbourne mission shapes everything we do and we want our impact on the environment to be as minimal as possible.

Cranbourne is located in a residential area with very limited parking. We therefore encourage students to travel to school by foot, bicycle or using public transport.



Phone Pouches

Mobile phones are not allowed in school. If your child wishes to bring their phone into school it must be put into a personally assigned phone pouch.

Pouches will be given to students on their first day at Cranbourne. Each pouch is assigned a number, which is linked to your child. This is so in the event of any pouches being lost on the school site we can locate the student it belongs to and return it to them.

On arrival at school, the pouch will be opened using one of our unlockers and the phone must be put and sealed inside. The phone remains in their possession throughout the school day.

At the end of the day the pouch can be opened at any of the gates or in Reception.

The pouches are very durable and can be cleaned on a cold wash cycle or with any disinfectant.

This system is in place to ensure there is no inappropriate use of their mobile during the school day.

If your child needs to contact a parent or carer, they can do so by going to the CPP office.

If a student's phone is seen out of their pouch it will be confiscated and a parent or carer will be required to make arrangements to collect the phone from the Headteacher. Phones will only be handed back to a parent or carer - students may not collect their phones themselves.

Students are expected to bring their pouch with them to school every day, even if they do not bring their mobile phone. This is part of the equipment checklist which is required by every Cranbourne student. If they do not have their pouch, they may be given a HEPPU session.

A replacement pouch can be purchased from the Finance Office for £10.

The pouch was designed by one of our students, Lyra, as part of our design competition.



Enrichment Activities



At Cranbourne, students are given the opportunity to try new activities, discover talents and explore interests. There are a variety of different after-school clubs and sports on offer - why not give something new a go? After-school clubs are free of charge, and require no sign ups. Students can attend as and when they like!

Each year, our Performing Arts Department put on show-stopping productions. In recent years, shows have included Legally Blonde, Sister Act and most recently, Guys and Dolls. The next production will be Matilda Jr in 2027.

We regularly have the opportunity to take groups of students to watch dress rehearsals for upcoming performances at Queen Mary's College.

We are also very proud to offer unique experiences and opportunities for students to attend trips outside of school. Recent trips include a Year 7 History visit to Salisbury Cathedral, visits to the West End, and our Hair and Beauty students got hands on experience at the Lush Factory in Poole.

Cranbourne is twinned with Lodewijk College in South Holland, where students have the opportunity to be pen-pals with the Dutch students before meeting in person.

Over the years, the scheme has been highly successful, with students making lifelong bonds.

We are grateful to be able to offer exciting experiences for students to attend trips outside of the UK. This year, students on our annual Ski Trip are due to be heading to Bardonecchia in the Italian Alps, and in Half Term 2027, Year 9 students studying 3D Design, Photography and Art will be exploring the culture of New York City.

We have an extensive careers programme at Cranbourne that aims to give students the tools they need to make informed decisions about their future.

We regularly have local businesses, colleges and the armed forces deliver assemblies, giving students an insight into what is on offer. In Year 9, students visit local universities and begin to explore potential pathways to Higher Education.

We host an annual Careers Fair and Year 10 students get a taste of life outside of Cranbourne when they complete a week of Work Experience. KS4 students can access 1:1 careers advice from a dedicated Careers Advisor and mentors from DWP.



Enrichment at Cranbourne

STEM club



Japanese club



Rounders club



Performing Arts club



Green Cranbourne



Athletics



Textiles club



LGBTQIA+ club



Knitting club



Art club



Pokémon Trading Club



Basketball



Chess club



Gardening Club



Table tennis



Poetry club



Swimming club



Badminton



History club



Football



Rugby



Vocal band



Cricket



Fitness Suite



Minecraft club



Netball



Homework Club



Rewarding Students

A rewards system is in place at Cranbourne to recognise and reward students who achieve their personal best. This creates a positive learning environment where everyone's right to learn is respected.

House points

Students are awarded House Points for each lesson they meet the basic expectations. Additional House Points can be earned for a number of things including high attendance, taking part in House competitions and contributions made to school life e.g. Open Evening. A full list of examples can be found on the next page.

Students will receive prizes throughout the year based on their House Point totals.

Rewards' Evening

Reward presentation evenings take place each term, which is a fantastic opportunity to celebrate the successes of our students. Heads of Department nominate one student per year group for their subject areas, and one exceptional student will be awarded the prestigious Headteacher's Award.

Role Model Student Award

Our Role Model Student award recognises student achievement and helps us celebrate 'Excellence in Everything'.

Students are nominated each month in recognition of excellent attitude, contribution to the Cranbourne Community or brilliant pieces of work.

Role Model Students receive a certificate and will be featured in our newsletter 'The Cranbourne Catch Up' and on our social media pages.

Learner of the Lesson

Learner of the Lesson aims to highlight individuals who consistently produce fantastic work during lessons, show resilience and come to Cranbourne each day with an excellent attitude towards their learning. Each week focuses on a different year group.

Students nominated will receive a sticker and certificate, be awarded 10 House Points and be entered into the prize draw which will be drawn in Whole School Assembly at the end of each term.





CRANBOURNE HOUSE POINTS & REWARDS

Teaching and Learning

Students can collect 1 House Point per lesson for meeting the lesson expectations. Class awards can also be earned for demonstrating outstanding attitude towards learning:

- **Literacy and oracy** (e.g. a superb verbal response, reading or written answer): 5 points
- **Learner of the Lesson** (e.g. outstanding learning and mastery, supporting another student with their learning): 10 points
- **Outstanding homework / independent learning:** 10 points
- **Outstanding performance in an assessment:** 10 points
- **Excellent contribution in lessons:** 5 house points
- **Subject Award Winner** (Rewards' Evening): 20 points



Cranbourne Values – Role Models

Students will achieve 20 House Points every time they are nominated as a role model by demonstrating one of our four values:

- **Creativity**
- **Challenge**
- **Community**
- **Care**

Students can be awarded points for demonstrating our core values in PDL, lessons, break and lunchtime or before and after school



House Competitions

Students will receive House Points for the following:

- **Entry of a House competition:** 10 points
- **Third place:** 50 points
- **Second Place:** 75 points
- **First place:** 99 points



Community

Students can earn House Points for their contribution to the wider community for:

- **Helping at school events:** 10 points
- **Attending after-school clubs:** 5 points
- **Representing Cranbourne:** 25 points
- **Committee Member:** 50 points
- **DofE full award:** 95 points
- **Community charity work:** 10 points
- **Volunteering:** 10 points
- **Significant personal achievement:** 20 points



Student Leadership

Student Leadership House Points will be awarded if a student receives one of the following positions:

- **House Ambassador:** 50 points
- **House Captain:** 75 points
- **Senior Prefect:** 80 points
- **Head Students:** 99 points



Rewards

Students will receive the following rewards for achieving House Points:

- **250 House Points:** Theatre Trip
- **500 House Points:** HOH Prize
- **750 House Points:** HOH Experience
- **1000 House Points:** Reward Choice
- **1250 House Points:** Reward Afternoon
- **1500 House Points:** Reward Trip
- **2000 House Points:** Excellence in Everything



Attendance

Students will receive attendance points for the following:

- **Weekly full attendance:** 5 points
- **Good attendance (above 96%) per term:** 50 points
- **Star Award (100% attendance) per term:** 75 points
- **Special recognition for significantly improved attendance:** 50 points



HEPPU Sessions

At Cranbourne, we expect our students to act in accordance with our Code of Conduct in order to keep everyone safe.

Our Cranbourne Values are very important to us and we encourage our students to embody these four principles (Care, Community, Creativity and Challenge) in every area of school life.

Whilst we encourage our students to make the right choices, we understand that sometimes we don't always get it right. In line with our Behaviour Policy, we give same-day after-school HEPPU support sessions for students who fail to meet the basic expectations.

Homework
Equipment
Punctuality
Pouch
Uniform

HEPPU Support Sessions are viewed as an opportunity for students to reflect and consider how they can make better choices in the future.

We encourage our students to take accountability for their own organisation, ensuring they have the necessary equipment to participate in lessons and arrive to their classes on time.

Homework Support Sessions give students dedicated time to complete their tasks in a quiet and calm environment.

These sessions run for 30 minutes (3pm - 3.30pm) and we will inform parents via text message of any sessions set for their child. We aim to do this by 1.30pm to give time for you to make any necessary transportation arrangements. Parents will also be able to view details of the session on the Behaviour tab on Edulink.

Students will be notified of their HEPPU session by the member of staff who set it and will be escorted to the Canteen at the end of the day by their Period 6 teacher. It is the students responsibility to attend their session and those who fail to attend will have their HEPPU session doubled to a 1 hour session the next day.



Catering

A large variety of different hot and cold meals and snacks are sold during both break time and lunch time from the Canteen and the Snack Shacks located around the school site. A two course meal from the Canteen currently costs £2.60.

An example menu and list of food items sold can be found below. A full list and allergy information is listed on our website.

	Monday	Tuesday	Wednesday	Thursday	Friday
Meat	Greek chicken flatbreads	Spaghetti bolognese	Chicken roast dinner	Chicken tikka curry	Chicken burger
Vegetarian	Greek halloumi flatbreads	Mac and cheese	Quorn roast dinner	Vegetable korma curry	Vegetable chow mein noodles
Sides	Chips	Garlic bread and salad	Roast potatoes and seasonal vegetables	Rice and naan bread	Chips and beans
Desserts	Cookies	Cupcakes	Crumble of the week	Cheesecake	Fudge

Daily Menu

- Bacon roll - £1.20
- Sausage roll - £1.20
- Hashbrowns - £1.20
- Pastries - £1.20
- Mozzarella sticks - £1.20
- Chicken nuggets and popcorn chicken - £1.30
- Pizza slices -£1.20
- Bacon and cheese flatbread - £1.60
- Breakfast muffin - £1.85
- Sandwiches, rolls, paninis and wraps from £1.10
- Jacket potatoes from £1.30
- Small and large pasta pots - 50p/£1.30
- Nachos - £1.20
- Popcorn - 90p
- Cookies - £1.00
- Doughnuts - £1.00
- Fresh cake slices from 60p
- Cereal bars - 75p
- Fruit pots - 50p



Food and drinks can be purchased in school from the Canteen or from one of our Snack Shacks during break and lunch time.

The Canteen will also be open before school for breakfast.

There are four Snack Shacks for students to go to - one in the quad by F block, one in the quad by E block, one by the entrance to A block and one by the Sports Hall.

The shacks sell snacks such as sandwiches, cookies, chicken nuggets, sausage rolls and much more. The canteen sells a bigger variety of these foods, as well as 2 course hot meals at lunch time.



Students will get the chance to try the food at your Transition Days.

Don't forget to ensure your child brings a water bottle to school each day to stay hydrated.

There are water fountains located across the school where they are able to fill them up if needed.

Special events

Our excellent Canteen team provide special menus for celebrations throughout the year including Christmas Lunch, Chinese New Year, Afternoon Tea and many more. Students are required to purchase tickets for these events in advance and on these days, the Canteen will be closed to other students.



Cashless system (biometric)

We operate a biometric cashless system for the catering service at Cranbourne. This enables us to deliver a more efficient, faster service at break times and provide wholesome, healthy and enjoyable meals at the lowest possible cost.

Parent Pay is an online system where parents make payment to their child's account via www.parentpay.com. There is a daily 'spend limit' programmed onto the system of £6.00 which can be decreased for an individual student by emailing the Finance Office at finance@cranbourne.hants.sch.uk. There is a re-valuer machine located in the Canteen which converts cash to fingerprint.

You will receive a letter detailing your username, password and how to make online payments via email in the first week of term.

Free school meals

Your child may be able to get free school meals if you receive certain benefits. To check your eligibility or make an application, please apply via Hampshire County Council at <https://apply.cloudforedu.org.uk/ofsm/hants>

If you require further information, please contact Mrs Cripps, Finance Manager on 01256 868608.

Cranbourne Online

In our efforts to make Cranbourne greener, more sustainable and environmentally friendly, the majority of our communication with parents is electronic.

School email address and login

All Cranbourne students have their own school e-mail address and login for school work purposes. The details needed to log in will follow the format below:

Username: 31Surname.First Initial
e.g. 31Dinsey.G

Email address:
username@cranbourne.hants.sch.uk
e.g 31Dinsey.G@cranbourne.hants.sch.uk

Password: Cranbourne26

Students can access their accounts online at <https://outlook.office.com/>

If you have any issues logging in, please contact Mr Dinsey at g.dinsey@cranbourne.hants.sch.uk

Please note, these will not be made live until the week online lessons begin.

School trips and consent forms

In line with guidance from Hampshire County Council, parents or carers will need to complete an online medical consent form to give your permission for students to attend school trips.

You will receive information inviting you to complete the form via Microsoft Teams in September.

All information provided is handled in accordance with Data Protection and GDPR guidelines.

Ticketsource

We use Ticketsource as a host for ticket booking for our school events and productions.

A copy of your ticket will be emailed to you after booking and will contain a QR code. Please ensure you have this available to scan either on your mobile phone or a printed copy for quick entry.

This enables us to speed up the signing in process when you arrive at events and allows us to monitor attendance.

You can view all events at www.ticketsource.co.uk/cranbourne-school



EduLink One

EduLink One is a web and app-based information and communication system. You can access your child's timetable, homework, attendance information, exam entries and results, achievements, House Points and other important academic information. Parents' Evening appointments are also booked through this system.

We will use this to communicate messages to you about school events, after-school clubs, letters home and other notices. There is a 'noticeboard' where we will upload posters and letters home in one easy to access place.

You can either log on to EduLink on a computer by visiting www.edulinkone.com or you can download the app on your mobile phone. Login information will be provided on the first day of school.

The image shows a screenshot of the EduLink One app interface. The interface is a grid of colorful icons on a light blue background. At the top, there is a navigation bar with a gear icon, a graduation cap icon, and an envelope icon. The main grid contains the following icons and labels:

- Timetable (clock icon)
- Forms (document with pencil icon)
- Documents (document icon)
- Exams (document with pencil icon)
- Behaviour (exclamation mark icon)
- Account Info (person icon)
- Contacts (phone icon)
- Housepoints (cup icon)
- Attendance (chart icon)
- Calendar (calendar icon)
- Catering (apple icon)
- Homework (briefcase icon)
- Parents' Evening (two people icon)
- Clubs (person running icon)
- Moments (camera icon)
- Update Information (document with pencil icon)
- Noticeboard (document with checkmark icon)
- Links (globe icon)

Red arrows point from text callouts to specific icons:

- Top right: "Click here to see any messages you've been sent" points to the envelope icon.
- Top left: "Students, parents and carers can view their timetable here" points to the Timetable icon.
- Middle left: "You can view what food and drink items have been bought, and check your child's balance" points to the Catering icon.
- Middle right: "You can view all homework set here" points to the Homework icon.
- Bottom left: "Parents' Evening appointments are booked through here" points to the Parents' Evening icon.
- Bottom right: "View clubs on offer and check club registers" points to the Clubs icon.
- Bottom left: "Make changes to your contact information here" points to the Update Information icon.
- Bottom right: "Letters, posters, newsletters and more will be available to view on the Noticeboard" points to the Noticeboard icon.

Online Taster Sessions

We are pleased to be able to offer online taster sessions for our new Year 7 students to meet some staff members and experience what lessons will be like at Cranbourne.

All subject taster sessions will take place at 6pm on Microsoft Teams. Invitations to attend these sessions will be sent to your child's school email address in advance and will include a link to join. Cameras must be turned off and microphones muted while attending these sessions.

2026 Timetable	MONDAY	TUESDAY	WEDNESDAY	THURSDAY
WEEK A W/C MONDAY 18 MAY		The Head of House Team 6PM Mrs Simpson		The English Team 6PM Miss Seirlis and Mr Williams
<i>HALF TERM – Monday 25 May – Friday 29 May</i>				
WEEK B W/C MONDAY 1 JUNE	The Geography Team 6PM Mr Girling		The Compass Team – Studying at Cranbourne 6PM Mrs Horimoto and Mrs Ellis	
WEEK A W/C MONDAY 8 JUNE		The Lighthouse Team 6PM Mrs Ryan and Mrs Millett		The History Team 6PM Miss Wood
WEEK A W/C MONDAY 15 JUNE	The Science Team 6PM Mr Searby		The Modern Foreign Languages Team 6PM Ms Corrigan and Ms Ramirez-Martínez	

Cranbourne Community

Here at Cranbourne, community is very special to us and we work closely with various community groups, schools, colleges and charities to support our students and parents as much as we can.

Cranbourne Food Pantry

We are extremely proud to have opened our Cranbourne Food Pantry in partnership with the Community Food Link.

Every Thursday between 11am and midday, we open our doors for members of our community to collect fresh produce, bakery items, canned goods and toiletries.

The Food Pantry is open to anyone in our community who needs it - no questions asked.



Second hand uniform shop and prom hire

Our Parent Support Advisor, Kathy Gare, organises our Second Hand Uniform Shop, which is available to any parents or carers who need support with obtaining uniform items for their child. The shop opens during August ahead of the new academic year, and is available year-round.

We also work in close partnership with businesses in the area who donate and loan prom dresses, suits, shirts and accessories in a range of sizes, styles and colours. Students can hire this from us for a very small cost to attend their Year 11 Prom.



Shoebox appeal

Each year, we are very pleased to support the Rotary Christmas Shoebox Appeal.

Students fill boxes with an assortment of toys, toiletries and educational books which are then delivered to disadvantaged children across the world.

Cluster primary schools

We have strong connections with our local cluster primary schools and are pleased to host a variety of sessions at Cranbourne including sports, food technology, swimming lessons and more.

Our Sports Leaders regularly deliver sessions with the primary pupils such as indoor athletics, football and trampolining which helps them to develop their leadership, organisation and communication skills, and mostly importantly - their confidence!



Each year, we host our annual Cluster Conference, where we invite pupils from the primary schools for a day of fun-filled activities, led by our Student Ambassadors.

Our annual Cranbourne Cluster Christmas Card Competition encourages primary students to create wonderful festive designs. We use the incredible winning design for our online Christmas card, which is displayed on our website and social media pages.



School Social Action Project

Each December, we support the homeless and vulnerably housed people in our community by collecting donations on behalf of the Camrose Centre.

We were blown away with the generosity of donations collected amongst our Cranbourne Community again this year.

Our Student Leadership Team visited the Camrose Centre to deliver a cash donation, alongside 87 toiletry items, 130 tins of vegetables, 64 bags of pasta, 21 jars of sauce, multiple packets of socks, underwear, hats and gloves, 10 boxes of chocolates and a whopping 28 packets of biscuits. We continue to work with the Camrose Centre and strive to make a real difference to our local community.

Green Cranbourne



At Cranbourne we are passionate about the environment and strive towards sustainability. Our Green Cranbourne mission shapes everything we do and we want our impact on the environment to be as minimal as possible, becoming a beacon to other schools in Basingstoke, Hampshire and further afield.

The prevalence of climate change in the media can make young people and adults feel helpless. All members of our learning community are involved in their own way and we believe in teaching our students that by working together with a common goal, we can make big changes!

Our 6 main focus points are:

- Reduce our energy use
- Reduce our consumption of resources
- Reduce, recycle and reuse resources
- Improve the biodiversity of Cranbourne
- Make our school more self-sufficient in growing our own food
- Have less processed food and more plant-based options in the canteen

We have launched several initiatives across the school to help encourage students to take accountability for their waste and recycle where possible. We have increased the number of recycling bins around the school site - you are never more than 20 metres away from one! Every fortnight we empty around 4,400 litres of recycling, which is the equivalent of 14.5 bathtubs full!



Students are encouraged to return their empty plastic bottles and cans to the Canteen, where their accounts will be credited 5p. We have a battery recycling collection box located in Reception, which saw 25.5kg of used batteries recycled last year.

Students can also recycle their old, used and broken pens by placing them in the mini bins in classrooms. Since launching the initiative last year, we have recycled an impressive 14kg of used pens that would have otherwise gone to landfill.

Every Wednesday, Miss Blackburn and Mr Targett meet with students as part of our Gardening Club. Students have been hard at work making our very own veggie patch, growing tomatoes, bell peppers and strawberries and more to be used in the canteen. We have also started composting food waste in the canteen and in our staffroom, which will be used to enrich the soil and help our veggie patch to thrive.

Our Catering team have worked hard to reduce the food miles created by our food deliveries and are exploring options to put more plant based foods on our menu.

Each year, we host 'The Big Cranbourne Clear Up', where our students volunteers set out into our local community armed with litter pickers and get to work cleaning up the local area.

Last year, an impressive 16.5kg of landfill waste and 9kg of recyclable materials were collected.



Green Cranbourne students have presented at various events in the area to share our successes with Hampshire Governors and inspire other local schools.

In July 2024, we were delighted to have our achievements recognised at Basingstoke 'A Place to be Proud of Awards', where we were awarded the Green Community Champion Award, sponsored by Tomato Energy.

We are striving to make Cranbourne as paperless as possible, sending all communications via Edulink - reducing our energy use and paper.

Be sure to check out our social media pages for updates on what our Green Cranbourne students have been up to!

Stay Up To Date

Follow us on social media

Are you following us on social media? Stay up to date with all the latest news and updates about life at Cranbourne.

We love to share all the incredible things our students get up to from classroom activities, visits to the school and school trips.



www.facebook.com/CranbourneInfo



www.twitter.com/Cranbourne_info

The Cranbourne Catch Up

Read all about Cranbourne life in our school newsletter, The Cranbourne Catch Up. Published fortnightly, the newsletter features news and information, student accounts of school trips, updates from the classroom and more.

A PDF version is available on our website at www.cranbourne.hants.sch.uk/community/school-newsletter

Hard copies are available on request, or can be found in Reception.

School website

Information about Cranbourne including policies, exam information, curriculum and the school calendar can be found on our website at www.cranbourne.hants.sch.uk/newsletter

Safeguarding newsletter

Each month, we publish a safeguarding newsletter, which explores different topics, trends we see in school and offers advice on how to have important conversations at home.

You can find past editions on our website at www.cranbourne.hants.sch.uk/safeguarding



Key Contacts at Cranbourne

Admissions and Transition to Cranbourne

- Mrs B North
- Admissions Officer
- 01256 868600 (option 3)
- 2026Year7@cranbourne.hants.sch.uk
- Ms P Corrigan
- Year 6 Transition Link and MFL Teacher
- p.corrigan@cranbourne.hants.sch.uk

SEND Support

- Mrs M Horimoto
- SENDCO
- m.horimoto@cranbourne.hants.sch.uk
- Mrs V Ellis
- Deputy SENDCO
- v.ellis@cranbourne.hants.sch.uk

Other useful contacts

- Mrs T Simpson
- **Head of Andrew Lloyd Webber House**
- t.simpson@cranbourne.hants.sch.uk
- Miss R Alner
- **Head of Austen House**
- r.alner@cranbourne.hants.sch.uk
- Mrs J Vaughan
- **Head of Thomson House**
- j.vaughan@cranbourne.hants.sch.uk
- Mr A Head
- **Head of White House**
- a.head@cranbourne.hants.sch.uk

Reception- 01256 868600

2026Year7@cranbourne.hants.sch.uk

gen.enquiries@cranbourne.hants.sch.uk*

*for use when your child begins in September



Year 6 Transition - Roadmap to Cranbourne

